

## VWR<sup>®</sup> Standard Line

### Instruction Manual Pipettors

- VWR Standard Line
- VWR 8-channel Standard Line
- VWR 12-channel Standard Line



This manual is available in additional languages at [www.vwr.com](http://www.vwr.com)

Table of Contents

1. Product Description .....	3
2. Packing .....	4
3. Pipettor Design .....	4
4. Safety Recommendations .....	5
5. Specifications .....	6
6. Pipettor Operation .....	8
7. Operating Instructions .....	12
8. Aspiration and Dispensing Instructions .....	13
9. Checking Pipetting Accuracy Parameters and Pipettor Recalibration .....	14
10. Pipettor Maintenance .....	18
11. Troubleshooting .....	19
12. Spare Parts .....	21
13. Technical service .....	23
14. Warranty .....	23

1. Product Description

The VWR® Standard Line single-channel pipettor is a volumetric instrument designed to measure and transfer liquids precisely and safely. It is available in volumes from 0.1 µL to 10,000 µL.

The VWR Standard Line 8-channel and 12-channel pipettors are designed for microplate filling. The pipettors enable precise and simultaneous delivery of 8 or 12 preset volumes of liquid. These pipettors are available in four volume ranges: 0.5-10 µL, 5-50 µL, 20-200 µL, and 50-300 µL.

Nominal Volume (µL)	Cat. No.	Range of Pipettor Volumes (µL)	Color Code
Single-channel Pipettors			
2	613-7102	0.1 - 2	Red
10	613-7103	0.5 - 10	
20	613-7104	2 - 20	Yellow
100	613-7105	10 - 100	
200	613-7106	20 - 200	Blue
1,000	613-7107	100 - 1,000	
5,000	613-7108	500 - 5,000	White
10,000	613-7109	1,000 - 10,000	
8-channel and 12-channel Pipettors			
8-10 12-10	613-7111 613-7115	0.5 - 10	Red
8-50 12-50	613-7112 613-7116	5 - 50	Yellow
8-200 12-200	613-7113 613-7117	20 - 200	
8-300 12-300	613-7114 613-7118	50 - 300	Green

VWR pipettors operate using an air-cushion (i.e., the aspirated liquid does not come into contact with the shaft or plunger of the pipettor). The liquid is drawn into the disposable tip attached to the pipettor.

2. Packing

The pipettors are delivered with the following:

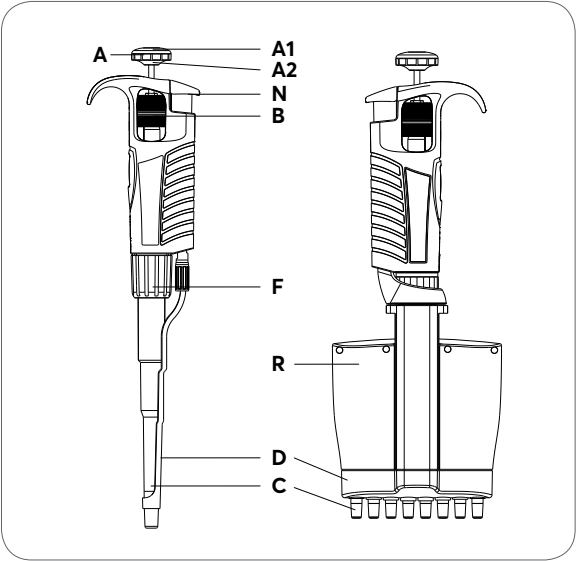
Description	Qty/Pk
Instruction manual	1
Quality Control certificate	1
Calibration key	1

Filters

The 5,000 and 10,000 µL pipettors include a replaceable filter, fitted at the bottom of the shaft which prevents aspirated liquid from entering the shaft and contaminating the inner surface and plunger. Use of the filter is particularly important when aspirating and dispensing large volumes of liquid. The filter should be replaced if it becomes wet.

3. Pipettor Design

Single- and Multi-channel Pipettors



- A. Pipetting pushbutton:** Consists of 2 parts: the pushbutton (A1) and the knob (A2).
- B. Volume adjustment knob:** Used to set the volume.
- C. Shaft:** Manufactured using high quality plastic, ensuring high chemical and mechanical strength.

- D. Tip ejector:** For multi-channel pipettors, the tips are ejected sequentially, reducing the required force.
- F. Shaft nut**
- N. Ejector pushbutton**
- R. Multi-channel manifold:** Contains a set of plungers and a set of flexible-suspension shafts, which function to reduce the force required to attach the tip.

Model Identification

The volume range of the pipettor is shown on the pushbutton and on the tip ejector bar in multi-channel pipettors.

4. Safety Recommendations

Long-term use of the pipettor relies on correct method of use. Please read and follow the instructions for use carefully.

Symbols used:

	Danger, risk of injury.
<b>NOTE</b>	Risk of damage to the pipettor or errors in pipetting.

NOTE:

- The pipettor is designed for the transfer of liquids only using the tip. Do not aspirate liquids without the tip attached. The aspirated liquid should not enter the pipettor, as it may cause damage.
- Single-use tips reduce the risk of contamination of samples.
- Keep the pipettor clean, avoiding the use of abrasive or corrosive cleaning agents (e.g., acetone).
- Keep the pipettor upright when there is liquid in the tip.
- Only using the pipettor in accordance with the manufacturer's instructions ensures the correct pipettor parameters are maintained.
- After replacing the plunger or the shaft, the pipettor should be calibrated.
- In the case of incorrect operation, the device should be cleaned in accordance with the Instruction Manual or transferred to a service point.
- Ambient operating temperature is +5°C to 45°C.
- Ambient storage conditions (in the original packaging during transport and short storage) is -25°C to 55°C.



When working with the pipettor:

- Follow general work safety regulations regarding hazards related to work in the laboratory.
- Take special care when pipetting aggressive substances.
- Use appropriate protective attire (e.g., clothing, goggles, and gloves).
- Avoid pointing the pipettor at yourself or others during use.
- Only use parts and accessories recommended by the manufacturer.

## 5. Specifications

The pipettor is a high quality instrument which offers excellent accuracy and precision. The accuracy and precision (repeatability) of the liquid volume depends on the quality of pipet tips used. The values for accuracy and precision shown in the table below were obtained using manufacturer non-filter pipet tips. Those tips are recommended for use to ensure compatibility, accuracy and precision when pipetting.

Nominal Volume (μL)	Volume (μL)	Accuracy (%)	Precision (%)	Non-filter Tips (μL)
<b>Single-channel Pipettors</b>				
2	Min.	0.1	±40.0	10
		0.2	±25.0	
		1	±2.7	
	Max.	2	±1.5	
10	Min.	0.5	±4.0	10
		1.0	±2.5	
		5.0	±1.0	
	Max.	10.0	±0.5	
20	Min.	2	±3.0	200
		10	±1.0	
		20	±0.8	
	Max.	20	±0.8	
100	Min.	10	±1.6	200
		50	±0.8	
		100	±0.8	
	Max.	100	±0.8	

Nominal Volume (μL)	Volume (μL)	Accuracy (%)	Precision (%)	Non-filter Tips (μL)
200	Min. 20	±1.2	≤0.60	200
	100	±0.8	≤0.25	
	Max. 200	±0.6	≤0.20	
1,000	Min. 100	±1.6	≤0.40	1,000
	500	±0.7	≤0.20	
	Max. 1,000	±0.6	≤0.15	
5,000	Min. 500	±1.2	≤0.50	5,000
	1,000	±0.6	≤0.25	
	2,500	±0.6	≤0.20	
	Max. 5,000	±0.5	≤0.15	
10,000	Min. 1,000	±2.5	≤0.6	10,000
	5,000	±0.8	≤0.3	
	Max. 10,000	±0.5	≤0.2	
8-channel and 12-channel Pipettors				
8 - 10 12 - 10	Min. 0.5	±10.0	≤8.0	10
	1	±8.0	≤6.0	
	5	±4.0	≤2.0	
	Max. 10	±2.0	≤1.2	
8 - 50 12 - 50	Min. 5	±4.0	≤2.5	200
	25	±3.0	≤1.2	
	Max. 50	±1.6	≤0.6	
8 - 200 12 - 200	Min. 20	±3.0	≤1.5	200
	100	±1.5	≤0.8	
	Max. 200	±1.0	≤0.6	
8 - 300 12 - 300	Min. 50	±1.6	≤1.5	300
	150	±1.2	≤1.0	
	Max. 300	±1.0	≤0.6	

The accuracy and precision were obtained gravimetrically using manufacturer tips performing at least 10 measurements of distilled water at a temperature of 20°C ± 1°C according to EN ISO 8655 standards.

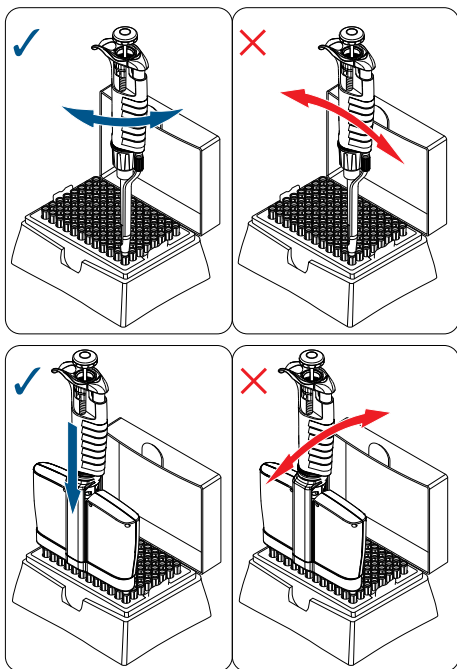
The use of tips from other manufacturers or filter tips may result in incorrect liquid aspiration and require pipettor recalibration.

The design of the pipettor enables the user to recalibrate it according to the information presented in Section 9.

## 6. Pipettor Operation

### Attaching the Tips

- Attach the correct tip corresponding to the model number displayed on the pipettor pushbutton (Section 5).
- Position the pipettor vertically when attaching tips.
- Single-channel pipettors: Push the pipet tip on firmly using a slight twisting motion to ensure an airtight seal.
- Multi-channel pipettors: Press the pipettor against the tips positioned in the rack box until the shaft retracts approximately 1.5 mm into the manifold. The suspension system ensures even and airtight sealing of the pipet tips. The rocking motion does not have to be performed to seal the pipet tips tightly.



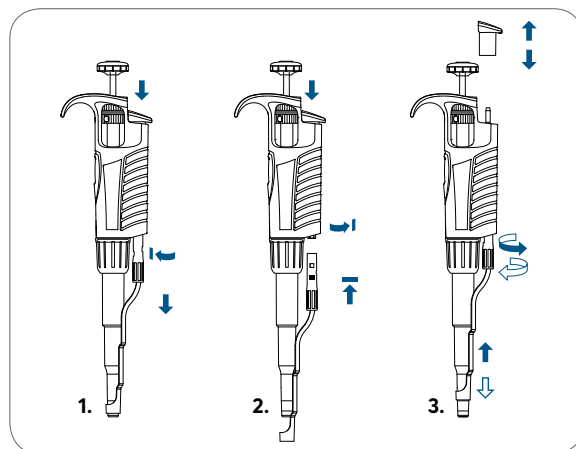
### NOTE:

- Do not attach the tips with a rocking movement, as this may damage the shaft or plunger. Observe this rule particularly with single-channel pipettors of low volume range.
- Never draw liquids directly into the pipettor without the tip attached.

### Adjusting the tip ejector

The tip ejector can be adjusted by the user and can accommodate most types of tips available on the market. When using narrow tubes, it may be necessary to remove the tip ejector.

#### 2-1,000 µL pipettors



#### 1. Tip ejector disassembly

- Press the tip ejector pushbutton.
- Turn the metal tip ejector 1/3 turn counter-clockwise.
- Slide the ejector from the plastic arbor.

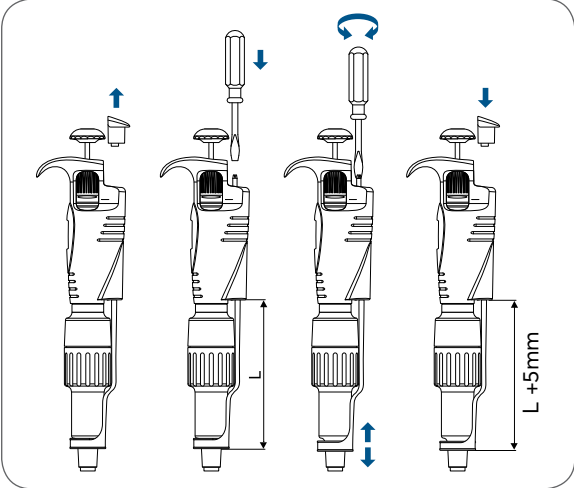
#### 2. Tip ejector assembly

- Press the tip ejector pushbutton.
- Line the metal tip ejector up with the plastic arbor.
- Turn the metal tip ejector clockwise until it has fully latched.

#### 3. Tip ejector adjustment

- Remove the tip ejector pushbutton.
- To increase the ejector length turn the plastic bush counter-clockwise.
- To decrease the ejector length turn the plastic bush clockwise.

5,000 and 10,000 µL pipettors



1. Tip ejector disassembly

- Remove the tip ejector pushbutton.
- Using a screwdriver, turn the metal arbor counter-clockwise to unscrew the ejector from the arbor.
- Release the ejector.

2. Tip ejector assembly

- Remove the tip ejector pushbutton.
- Using a screwdriver, turn the metal arbor clockwise to secure the ejector and adjust its length.

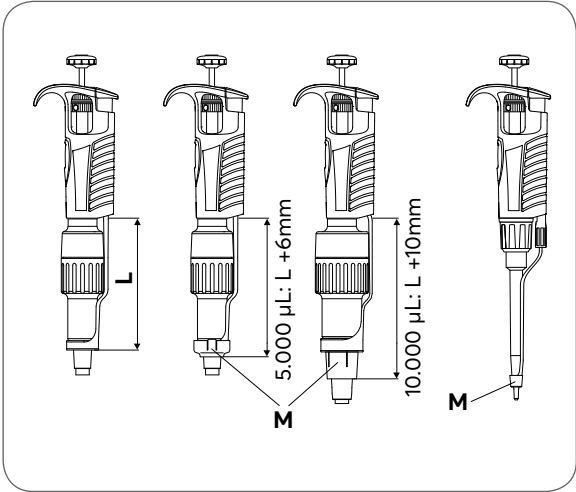
**NOTE:** Leave a space of at least 1 mm between the shaft and tip ejector collar.

3. Tip ejector adjustment

- Remove the ejector pushbutton.
- Use the screwdriver to increase or decrease the ejector length.
- Following ejector assembly or adjustment, ensure the ejector pushbutton is relocated.

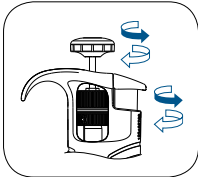
If the tip ejector cannot be adjusted sufficiently, or if the diameter of the ejector is insufficient to eject the tip, it may be necessary to attach the ejector cap “M” to the ejector.

In 2 and 10 µL pipettors place the cap, that can be purchased separately, on the bottom of the pipettor shaft and slide the cap upwards to the bottom of the tip ejector.



Volume Setting

Aspiration volume can be set by either turning the pipetting pushbutton knob, or the adjustment knob. The volume setting is displayed as a three digit counter, which should be read from top to bottom. The smallest volume increment is printed on the bottom counter drum.



Examples of counter indications

The decimal point in the volume of aspirated liquid (µL or mL) is indicated by change in color of digits. Black digits represent integer numbers, and red digits represent decimal fractions (up to 20 µL).

1	0	0
2	3	7
5	5	5

Volume Ranges	0.1-2 µL	5-50 µL	100-1,000 µL
Set Volume	1.25 µL	35 µL	750 µL (0.75 mL)
Increment	0.002 µL	0.2 µL	2.0 µL

For maximum accuracy, the set volume must be approached from a higher value by decreasing counter readings. Before reaching the desired value, reduce the speed of turning the adjustment knob to avoid inadvertently exceeding the desired value.

## 7. Operating Instructions

Observing the following recommendations will ensure maximum possible accuracy and precision of liquid sampling.

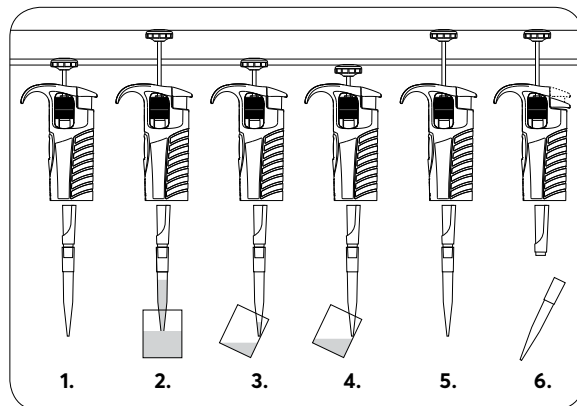
- Ensure smooth and slow operation of the pipettor.
- Immersion of the tip into the sample liquid should be kept to a minimum depth, which should remain constant during aspiration. The recommended immersion depths are given in the table below.

Model Volume Range (μL)	Immersion Depth (mm)
0.1-1	≤1
1-100	2-3
101-1,000	2-4
5,000	3-6
10,000	5-7

- The pipettor should be held in a vertical position.
- The pipet tip should be changed whenever the volume setting is altered, and when a different liquid is to be aspirated.
- The pipet tip should be changed if a droplet remains on the end of the tip from the previous pipetting operation.
- Each new pipet tip should be pre-rinsed with the liquid to be pipetted.
- Liquid should never enter the pipettor shaft.  
To prevent this:
  - Press and release the pushbutton slowly and smoothly.
  - Never turn the pipettor upside down.
  - Never lay the pipettor on its side when there is liquid in the tip.
- Never force the volume setting beyond the recommended limits.
- When pipetting liquids with a different temperature from the ambient temperature, it is recommended to pre-rinse the tip several times prior to use.
- Do not pipette liquids with temperatures above 70°C.

**NOTE:** When pipetting acids or corrosive solutions which emit vapors, it is recommended to disassemble the shaft and rinse the plunger and O-ring with distilled water after finishing the pipetting operation.

## 8. Aspiration and Dispensing Instructions



### Aspirating Liquid

1. Press the pushbutton to the first stop point. Holding the pipettor vertically, immerse the pipet tip into the sample liquid to the recommended depth (for recommended values see Section 7). If the pipet tip is not immersed to the recommended depth or if the pushbutton is rapidly released, air may enter the pipet tip.
2. Release the pushbutton slowly and smoothly to aspirate the sample. Wait one second and then withdraw the pipet tip from the liquid.

**CAUTION:** Do not touch the used tip.

### Dispensing Liquid

3. Place the end of the pipet tip against the inside wall of the vessel at an angle of 10° to 40°. Press the pushbutton smoothly to the first stop. Wait one second.
4. Press the pushbutton to the second stop to expel any remaining liquid. While keeping the pushbutton depressed, remove the pipettor from the vessel by drawing the pipet tip against the inside surface of the vessel.
5. Release the pushbutton to its starting position.
6. Eject the pipet tip by pressing the tip ejector pushbutton.



Remember to change the pipet tip whenever a different type of liquid is to be sampled.

Aspirating High-density Liquids

When pipetting liquids of higher viscosity or lower surface tension than water (e.g., sera or organic solvents), a film of liquid may be formed on the inside of the pipet tip which may produce erroneous results. As the film remains relatively constant in successive pipetting operations with the same tip, this error can be eliminated by pre-rinsing the tip and allowing a film to form before transferring the first sample. This is achieved by aspirating a sample and dispensing it back into the same vessel. Allowing a film to form prior to sampling ensures optimal accuracy and repeatability.

This pre-rinsing operation should be repeated when the volume to be aspirated is changed or when a new pipet tip is used.

**NOTE:** Normally the degree of error resulting from viscous liquids is negligible if pipetting is performed slowly and carefully, however, this can be minimized further by holding the pipet tip in position for at least 2 seconds after aspiration to allow the liquid time to react to the change in pressure before it is dispensed.

If the above method does not result in accurate values, recalibrate the pipettor in accordance with Section 9.

It is recommended to record recalibration and correction values, in order to facilitate reverse calibration to a standard liquid.

Filters

The 5,000 and 10,000 µL pipettors include a replaceable filter (L), fitted at the bottom of the shaft which prevents aspirated liquid from entering the shaft and contaminating the inner surface and plunger. Use of the filter is particularly important when aspirating and dispensing large volumes of liquid. The filter should be replaced if it becomes wet.

9. Checking Pipetting Accuracy Parameters and Pipettor Recalibration

The pipettors have been factory-calibrated using gravimetric methods with manufacturer pipet tips and distilled water, in accordance with ISO 8655 guidelines for the maximum (nominal) liquid volume drawn by the pipettor and for 10% of the maximum or minimum liquid volume according to the values given (Section 5).

The pipettors are designed to enable recalibration and adaptation to different pipetting techniques and liquid properties (e.g., temperature, density, and viscosity).

Periodic checks of the operation of the pipettor are recommended at least once per year. Frequency of checks should be increased depending on workload, sterilization or autoclave processes, and frequency of replacement of component parts.

If during pipettor operation the accuracy error (the difference between the real aspirated volume and the preset volume) exceeds the permissible value given in the table in Section 5, pipettor recalibration should be carried out.

Recalibration of the pipettor involves setting the counter to the value of the liquid volume obtained by weighing. Recalibration of the pipettor is valid only for one liquid volume drawn by the pipettor.

The recommended volume for recalibration is 10% of the maximum (nominal) value or minimum volume depending on which of these values is greater. See table on page 16 for more details.

Parameters for Checking the Pipetting Accuracy

The pipetting accuracy is influenced by factors such as: tips used, characteristics of the pipetted liquid (density, viscosity), and operating conditions (ambient temperature, pressure).

To determine the accuracy error of the pipettor, the following conditions should be met:

- Ambient temperature and temperature of the pipettor, pipet tips, and liquid should be within the range of 20°C to 25°C and stabilized during weighing within ±0.5°C.
- Measurements should be conducted using distilled water.
- Balance sensitivity should be suitable for the volume "V" to be measured.

Volume Checked (V, µL)	Balance Sensitivity (mg)
0.1≤V≤10	0.001
10≤V≤100	0.01
100≤V≤1,000	0.1
V>1,000	0.1

- When calculating the liquid volume aspirated by the pipettor, the conversion factor (Z) [µL/mg] for distilled water or a liquid with comparable density should be taken into account. Sample values of conversion factors are given in the following table.



Temperature (°C)	Pressure (kPa)		
	95.0	101.3	105.0
20	1.0028	1.0029	1.0029
21	1.0030	1.0031	1.0031
22	1.0032	1.0033	1.0033
23	1.0034	1.0035	1.0036
24	1.0037	1.0038	1.0038
25	1.0039	1.0040	1.0040

See ISO 8655 for the full table of conversion factors (Z).

**NOTE:** Pipetting should be performed in accordance with guidance described in Sections 7 and 8.

### Checking the Pipetting Accuracy Parameters

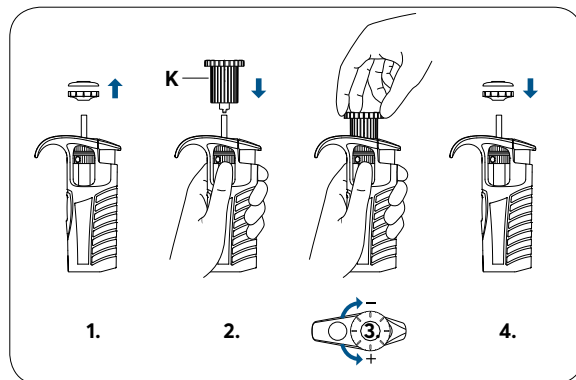
- Set the preset volume depending on the pipettor volume according to the following table.

Nominal volume ( $\mu\text{L}$ )	Preset volume ( $\mu\text{L}$ )	Permissible values ( $\mu\text{L}$ )	Volume Change $\Delta\text{V}$ ( $\mu\text{L}$ ) for a Turn of a Calibration Key by	
			1 Turn	1 Increment
Single-channel Pipettors				
2	0.2	0.176 - 0.224	0.06	0.0025
10	1	0.975 - 1.025	0.33	0.0137
20	2	1.94 - 2.06	0.63	0.0262
100	10	9.84 - 10.16	2.50	0.104
200	20	19.76 - 20.24	6.30	0.262
1,000	100	98.4 - 101.6	25.00	1.04
5,000	500	494 - 506	125.00	5.2
10,000	1,000	975 - 1,025	250.00	10.4
8-channel and 12-channel Pipettors				
10	1	0.92 - 1.08	0.33	0.0137
50	5	4.8 - 5.2	1.67	0.070
200	20	19.4 - 20.6	6.30	0.262
300	50	49.2 - 50.8	10.00	0.42

- Perform 10 aspirations, and calculate the average value in [mg].
- Calculate the volume in [ $\mu\text{L}$ ] by multiplying the value in [mg] by the conversion factor Z [ $\mu\text{L}/\text{mg}$ ].

If the average aspirated volume exceeds the permissible values of the range, the pipettor should be recalibrated.

### Pipettor Recalibration



1. Remove the pipetting pushbutton.

**CAUTION:** The pipetting pushbutton consists of 2 parts: the knob and the pushbutton. After removal of the pushbutton, both parts are separated.

2. Insert the calibration key into the calibration screw.
3. Holding the volume setting knob to prevent rotation, turn the key clockwise to reduce the aspirated volume, or counter-clockwise to increase the aspirated volume. Use the values given in the above table to precisely adjust the volume.
4. Remove the key and replace the pipetting pushbutton by first replacing the knob, then the pushbutton.

Determine the average aspirated volume. The average volume should be within the permissible range given in the table. If the volume exceeds the values stated, the recalibration procedure should be repeated.

When pipetting liquids with physical properties considerably different from those of water, follow the guidance given in Section 5.

More information on the calibration procedure can be found at [www.vwr.com](http://www.vwr.com)

10. Pipettor Maintenance

Depending on the applications and intensity of use, the pipettor requires periodic maintenance. The components exposed to corrosive vapors, such as shaft elements, should be regularly checked and cleaned.



Do not use sharp tools for pipettor maintenance. It may cause damage to the device and affect the user's safety.

Cleaning

External surfaces of the pipettor such as the push-button, ejector pushbutton, handgrip, shaft nut, and adjustment knob may be cleaned using a cloth dampened in isopropyl alcohol. The remaining parts removed from the pipettor during pipettor disassembly may be washed with distilled water or isopropyl alcohol.

**NOTE:** Before using cleaning agents other than those recommended by the manufacturer, check the compatibility charts and consider chemical resistance of the following plastics which form components of the pipettor: PP, PC, POM, PA, PPS, PVDF.

Sterilization

Sterilization using an autoclave

The pipettor can be sterilized in an autoclave at 121°C for 20 minutes. Sterilization under other conditions may cause damage to the pipettor. It is recommended to:

- Unscrew the shaft nut slightly in the 2-1,000 µL pipettors, and unscrew the shaft slightly in the 5,000 µL and 10,000 µL. After autoclaving these parts should be screwed tight again.
- Sterilize the pipettors using an autoclave with an initial vacuum and drying cycle.
- After sterilization, the pipettor should be dried and cooled to room temperature.
- The shaft of the 5,000 µL and 10,000 µL models should be autoclaved without the filter.

Precision and accuracy should not alter if the pipetting processes including autoclaving are carried out as described in this manual. If a change in accuracy occurs, it is recommended to:

- Check the calibration of the pipettor after the first, third, and fifth autoclaving cycles and then after every 10 autoclaving cycles.

Ultra Violet (UV) Sterilization

The pipettors are UV resistant. The distance from the radiation source to the exposed element of the pipettor should be at least 50 cm. Prolonged or intense UV exposure can cause discoloration of pipettor parts but does not affect its performance.

11. Troubleshooting

If a problem is encountered during pipettor operation, use the following table to identify and eliminate the fault following the instructions provided. Replacement of parts should be required only occasionally and should not be required with normal pipettor use.

Problem	Cause	Solution
Droplets of liquid remain in the pipet tip.	The pipet tip is emptied too fast.	Decrease the speed of pressing the pipettor pushbutton.
	The pipet tip wettability has increased due to extensive use.	Replace the tip with a new one.
Droplets of air appear in the liquid aspirated into the pipet tip.	The pipet tip immersion depth is too shallow.	Immerse the tip to the recommended depth according to the instructions.
	The pipet tip is incorrectly pressed onto the pipettor shaft.	Press the pipettor tip firmly onto the pipettor.
	The tip is damaged or worn out due to extensive use.	Replace the tip with a new one.
The pipettor incorrectly aspirates the liquid or the liquid drops out from the tip.	The pipettor tip is incorrectly pressed onto the pipettor shaft.	Press the pipet tip firmly onto the pipettor.
	The shaft surface is damaged or contaminated at the sealing site.	Clean the shaft or replace it with a new one.

Problem	Cause	Solution
The pipettor incorrectly aspirates the liquid or the liquid drops out from the tip.	The plunger or the O-ring is damaged due to prolonged aspiration of corrosive liquids.	Disassemble the shaft set; wash the shaft, the plunger and the seal (Section 10: Cleaning). Replace the elements with new ones if necessary. Apply a small amount of lubricant onto the plunger and reassemble the set in the correct order.
	The inside of the pipettor is contaminated.	
	The sealing elements are not sufficiently lubricated.	
Uneven work of the pipetting set, the pipetting pushbutton gets blocked.	The inside of the pipettor is contaminated due to aspiration of corrosive substances.	Unscrew the shaft set, wash the parts. Replace the elements with new ones if necessary. Apply a small amount of lubricant on the plunger and reassemble the set in the correct order.
	The inside of the pipettor is contaminated due to the liquid entering the pipettor.	
	The sealing elements are not sufficiently lubricated (e.g., after repeated autoclaving procedures).	
Incorrect aspiration.	Liquid with properties other than water (density, viscosity).	Calibrate the pipettor using the liquid which is to be pipetted.
	Tips with a filter with increased flow resistance.	Calibrate the pipettor using the tips which are to be used for pipetting.

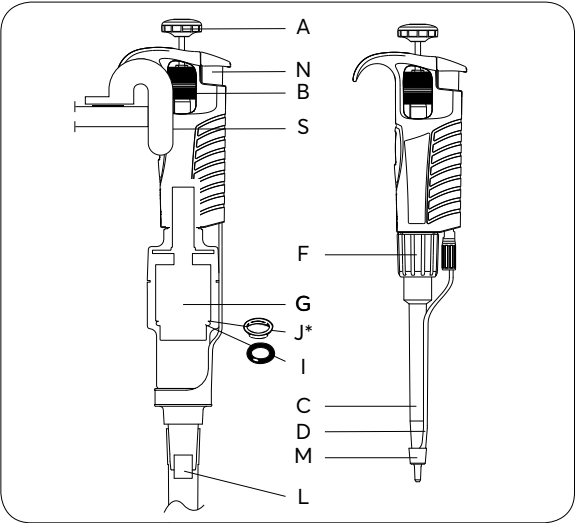
If the problem persists after carrying out the above steps, contact our regional representative.

Before returning the pipettor, please ensure the pipettor is completely free of any chemical, radioactive, or microbiological contamination which could pose a threat during transport and repair.

## 12. Spare Parts

Contact our Customer Service to inquire about availability of spare parts. Pipettor model and name of the part required should be specified. The most common parts are depicted below.

**NOTE:** The replacement of the plunger requires conducting the calibration procedure according to Section 9.



\*Seal (J) used only in models 2, 5,000 and 10,000 µL

Item	Description	Model (µL)	Cat. No.	Qty/Pk
A	Pipetting pushbutton	2	SP19701	1
		10	SP19702	1
		20	SP19703	1
		50	SP19707	1
		100	SP19704	1
		200	SP19705	1
		300	SP19710	1
		1,000	SP19706	1
		5,000	SP19708	1
		10,000	SP19709	1

Item	Description	Model (µL)	Cat. No.	Qty/Pk
<b>C, I, J*</b>	Shaft with O-ring and seal	2	SP19171	1
		10	SP19172	1
		20	SP19173	1
		100	SP19174	1
		200	SP19175	1
		1,000	SP19176	1
		5,000	SP19178	1
<b>D</b>	Tip ejector	10,000	SP19179	1
		2, 10	SP19076	1
		20, 100	SP19077	1
		200	SP19079	1
		1,000	SP19078	1
		5,000	SP19452	1
<b>F</b>	Shaft nut	10,000	SP19453	1
		2 - 1,000	SP29444	1
<b>G</b>	Plunger assembly	2	SP19381	1
		10	SP19382	1
		20	SP19383	1
		100	SP19384	1
		200	SP19385	1
		1,000	SP19386	1
		5,000	SP19388	1
		10,000	SP19389	1
<b>I, J*</b>	O-ring (and seal)	2	SP19101	10
		10	SP19102	10
		20	SP19103	10
		100	SP19104	10
		200	SP19105	10
		1,000	SP19106	10
		5,000	SP19108	5
		10,000	SP19109	5
<b>K</b>	Calibration key	All	SP9479	1
<b>L</b>	Shaft filter	5,000, 10,000	SP19476	10

Item	Description	Model (µL)	Cat. No.	Qty/Pk
<b>M</b>	Tip ejector cap	2, 10	SP19378	3
		5,000	SP19466	3
		10,000	SP19467	3
<b>N</b>	Ejector button	All	SP29358	1
<b>S</b>	Shelf clip	All	SP19483	1

\*Seal (**J**) used only in models 2, 5,000 and 10,000 µL

### 13. Technical service

#### Web Resources

Visit the VWR website at [www.vwr.com](http://www.vwr.com) for:

- Complete technical service contact information
- Access to the VWR Online Catalogue, and information about accessories and related products
- Additional product information and special offers

#### Contact us

For information or technical assistance contact your local VWR representative or visit [www.vwr.com](http://www.vwr.com)

### 14. Warranty

**VWR** warrants that this product will be free from defects in material and workmanship for a period of five (5) years from date of delivery. If a defect is present, VWR will, at its option and cost, repair, replace, or refund the purchase price of this product to the customer, provided it is returned during the warranty period. This warranty does not apply if the product has been damaged by accident, abuse, misuse, or misapplication, or from ordinary wear and tear. If the required maintenance and inspection services are not performed according to the manuals and any local regulations, such warranty turns invalid, except to the extent, the defect of the product is not due to such non-performance.

Items being returned must be insured by the customer against possible damage or loss. This warranty shall be limited to the aforementioned remedies. IT IS EXPRESSLY AGREED THAT THIS WARRANTY WILL BE IN LIEU OF ALL WARRANTIES OF FITNESS AND IN LIEU OF THE WARRANTY OF MERCHANTABILITY.

# Our local offices in Europe, AMEA and North America



## Austria

VWR International GmbH  
Graumannsgasse 7  
1150 Vienna  
Tel.: +43 1 97 002 0  
Email: info.at@vwr.com

## Belgium

VWR International BV  
Researchpark Haasrode 2020  
Geldenaaksebaan 464  
3001 Leuven  
Tel.: +32 016 385 011  
Email: vwr.be@vwr.com

## Canada

VWR International  
2360 Argentia Road  
Mississauga, Ontario L5N 5Z7  
Tel.: +1 800 932 5000  
Email: Canada\_Orders@vwr.com

## China

VWR (Shanghai) Co., Ltd  
Bld.No.1, No.3728 Jinke Rd,  
Pudong New District  
Shanghai, 201203- China  
Tel.: +400 821 8006  
Email: info\_china@vwr.com

## Czech Republic

VWR International s. r. o.  
Veetee Business Park  
Pražská 442  
CZ - 281 67 Strbříčná Skalice  
Tel.: +420 321 570 321  
Email: info.cz@vwr.com

## Denmark

VWR International A/S  
Tobaksvejlen 21  
2860 Søborg  
Tel.: +45 43 86 87 88  
Email: info.dk@vwr.com

## Finland

VWR International Oy  
Valimotie 17-19  
00380 Helsinki  
Tel.: +358 9 80 45 51  
Email: info.fi@vwr.com

## France

VWR International S.A.S.  
Immeuble Estréo  
1-3 rue d'Aurion  
93114 Rosny-sous-Bois cedex  
Tel.: 0 825 02 30 30\* (national)  
Tel.: +33 (0) 1 45 14 85 00 (international)  
Email: info.fr@vwr.com  
\* 0,18 € TTC/ min + prix appel

## Germany

VWR International GmbH  
Hilpertstrasse 20a  
D - 64295 Darmstadt  
Freecall: 0800 702 00 07  
Tel.: +49 (0) 6151 3972 0 (international)  
Email: info.de@vwr.com

## Hungary

VWR International Kft.  
Simon László u. 4.  
4034 Debrecen  
Tel.: +36 (52) 521-130  
Email: info.hu@vwr.com

## India

VWR Lab Products Private Limited  
No.139, BDA Industrial Suburb,  
6th Main, Tumkur Road,  
Peenya Post,  
Bangalore, India - 560058  
Tel.: +91-80-28078400  
Email: vwr\_india@vwr.com

## Ireland

VWR International Ltd  
Orion Business Campus  
Northwest Business Park  
Ballycoolin  
Dublin 15  
Tel.: +353 01 88 22 222  
Email sales.ie@vwr.com

## Italy

VWR International S.r.l.  
Via San Giusto 85  
20153 Milano (MI)  
Tel.: +39 02-3320311/02-487791  
Email: info.it@vwr.com

## Korea

Avantor Performance Materials Korea Ltd  
2F ACE Gwanggyo Tower I  
Daehak 4ro 17  
Yeongtong-gu Suwon  
Korea 16226  
Tel.: +82 31 645 7250  
Email: saleskorea@avantorsciences.com

## Mexico

VWR International, S.de R.L.  
de C.V.  
Km. 14.5 Carretera  
Tlalnepantla-Cuautitlán  
Col. Lechería  
Tultitlán Edo. de México  
CP 54940  
Tel.: +52 (55) 5005 0100  
Email: vwrmx@vwr.com

## Middle East & Africa

VWR International FZ-LLC  
Office 203, DSP Lab Complex,  
Dubai Science Park  
Dubai, United Arab Emirates  
Tel.: +971 4 5573271  
Email: info.mea@vwr.com

## The Netherlands

VWR International B.V.  
Postbus 8198  
1005 AD Amsterdam  
Tel.: +31 020 4808 400  
Email: info.nl@vwr.com

## Norway

VWR International AS  
Brynsalleen 4  
0667 Oslo  
Tel.: +47 22 90 00 00  
Email: info.no@vwr.com

## Poland

VWR International Sp. z o.o.  
Limbowa 5  
80-175 Gdańsk  
Tel.: +48 058 32 38 210  
Email: info.pl@vwr.com

## Portugal

VWR International -  
Mat. de Laboratório,  
Soc. Unipessoal, Lda  
Edifício Ramazzotti  
Avenida do Forte 6,  
P-109 e P-110  
2790-072 Carnaxide  
Tel.: +351 21 3600 770  
Email: info.pt@vwr.com

## Singapore

VWR Singapore Pte Ltd  
18 Gul Drive  
Singapore 629468  
Tel.: +65 6505 0760  
Email: sales.sg@vwr.com

## Spain

VWR International Eurolab S.L.  
C/ Tecnología 5-17  
A-7 Llinars Park  
08450 - Llinars del Vallès  
Barcelona  
Tel.: +34 902 222 897  
Email: info.es@vwr.com

## Sweden

VWR International AB  
Fagerstagatan 18b  
163 94 Stockholm  
Tel.: +46 08 621 34 20  
Email: info.se@vwr.com

## Switzerland

VWR International GmbH  
Lerzenstrasse 16/18  
8953 Dietikon  
Tel.: +41 044 745 13 13  
Email: info.ch@vwr.com

## UK

VWR International Ltd  
Customer Service Centre  
Hunter Boulevard  
Magna Park  
Lutterworth  
Leicestershire  
LE17 4XN  
Tel.: +44 (0) 800 22 33 44  
Email: uksales@vwr.com

## United States

VWR International, LLC  
100 Matsonford Road  
Building One Suite 200  
Radnor, PA 19087  
Tel.: +1 800 932 5000  
Email: vwrcustomerService@vwr.com